

VOLTSMART®

Energy Efficient Fuseboards

@VOLTSMART.COM





Innovative Energy Solutions

Voltsmart are the only energy-efficient fuse boards that help save power and resources. Our all-in-one units include voltage optimisation, fire safety features and energy saving technology which works in complete synergy with all other renewable energy systems. We offer a comprehensive fuse board range to meet the specific requirements of any project, ensuring efficiency and safety.

Focused on innovation and sustainability, we continually look for ways to improve energy savings, reduce waste and cut carbon emissions. Our solutions support both environmental and social sustainability goals.

Key Sections

Voltsmart Range 01

Advantages 02

Features 03

Fire Safety Features 04

Product Specifications 05



0333 344 5629



info@voltsmart.com



www.voltsmart.com



Voltsmart Range

Voltsmart provides an efficient modern solution for residential properties

With interchangeable switchgear, Voltsmart allows flexible customisation to meet specific requirements whether it's RCDs, AFDDs, RCBOs, or a combination of all. Integrated auto transformer technology reduces energy consumption by optimising incoming voltage, leading to lower electricity bills, reduced carbon emissions and extending the lifespan of electrical appliances. Incorporating up to four fire safety features for energy efficiency and enhanced safety.

All Voltsmart fuse boards are available in various sizes to meet your requirements. Detailed specifications sheets are included at the back of this catalogue for your reference.

Essentials Range

Designed for practical energy savings, the essentials range offers a single voltage reduction of 7.5%, delivering a straight forward solution to energy efficiency.

Standard Range

The standard range includes three voltage taps, providing versatility and precision. Available in all sizes, as listed in the specification sheets.

Smart Range

The smart range takes energy management to the next level with intelligent monitoring capabilities, collecting 54 times more data than a standard smart meter. This advanced range provides unparalleled insights into your energy usage.



PM 643707 EMS 768625

Advantages

- Stops electrical appliances from being overpowered
 - Prevents energy wastage
 - Increases the lifespan of electrical goods
 - Reduces electricity consumption
 - Lowers carbon emissions
 - Enhances the performance of other renewable products
 - Improves electrical safety with up to 4 fire safety features
 - Easily installed by a qualified electrician
 - 10 year warranty
-



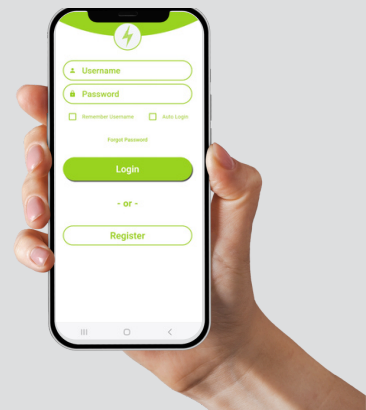
Features

For residential users, our app is specifically designed to provide homeowners with full visibility and control over their energy usage.

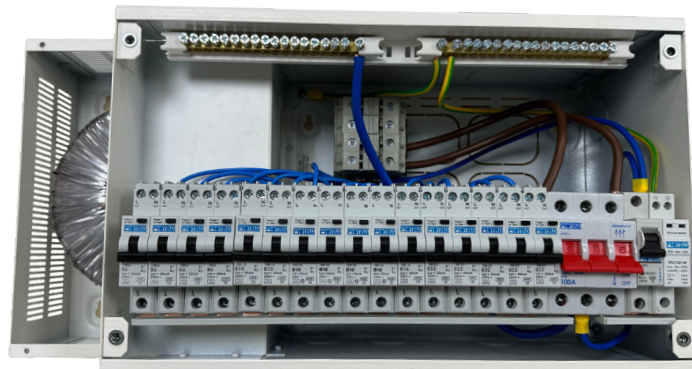
The app allows you to monitor real-time energy consumption on every circuit, track savings and identify which appliances or areas of the home are using the most power. With our user-friendly interface, homeowners can make informed decisions to maximise their energy efficiency even further.

It is an easy, effective way to take control of your home's energy management.

Available 2025



- Detects faults on circuits and notifies you promptly
- 54 x more live data than a traditional smart meter
- Easily download your warranty directly from the app
- Compare energy usage with and without Voltsmart
- Simple Wi-Fi setup with the WPS button
- Serves as a hub for connecting other smart technologies



Fire Safety Features

Automatic Fire Suppression System (AFSS)

Voltsmart fuse board features AFSS, a fire protection system with a thermoplastic tube that bursts at 70°C, quickly suppressing fires. It reduces the risk of overheated cables and enhances fire safety in residential and commercial properties.



Auto Transformer

Voltsmart's auto-transformer reduces voltage to 220V, enhancing electrical safety by preventing overheating, device breakdowns and fires. This leads to equipment longevity, cost savings, improved home safety, sustainability and efficiency.



Surge Protection

Surge protection safeguards electrical equipment from power surges, such as lightning strikes. It detects and redirects excess voltage, ensuring the safety and reliability of the electrical system.



Arc Fault Detection Devices (AFDDs) (Optional Extra)

AFDDs enhance electrical safety by quickly detecting and addressing arc faults using microprocessor technology. They monitor electrical waveforms, cut power to the circuit when a fault is detected and reduce the risk of electrical fires, thus improving building safety.



0333 344 5629



info@voltsmart.com



www.voltsmart.com

Specifications

TECHNICAL DATA



Product code

VSDB-63 8W /
VSDB-100 8W

Product range

Voltage optimisation

Issue No.

A

Issue Date

23/01/2023

Issue By

S.A.H

**All-in-one auto-transformer and consumer unit.
C/W type 2/3 surge protection device.**

Features:

- Selectable voltage to suit installation
- Selectable protection (RCBO, RCD, MCB, AFDD)
- 1 x automatic fire suppression system
- Type 2/3 surge arrester
- 1 x auto-transformer (63A or 100A)
- Supplied with 1 x 100A isolator
- Full complement of earth, neutral terminals and busbar
- Labels and instructions
- Amendment 3 compliant
- Metal clad enclosure

DESCRIPTION

General characteristics	8 way optimised unit	Cable entry	40 mm K.O's + rear cut outs
Standards	BS EN 61439-3	Material (enclosure)	Mild steel
Current rating	63A / 100A	Finish	Powder coat white RAL 9010
Input voltage	230V-275V ~	Weight VSDB63	15.35kg
Optimised output voltage	-6% , -8% , -10%	Weight VSDB100	19.5kg
Efficiency	>99.7%	Dimensions VSDB63	(W = 359 mm) x (H = 258 mm) x (D = 198mm)
Frequency	50 Hz.	Dimensions VSDB100	(W = 409 mm) x (H = 258 mm) x (D = 198mm)
Fault current rating	16kA	Surge device details	
No. of poles	Single pole	Remote indication	Yes
No. of ways	13	Designation according to EN 61643-11	Type 2/3
Useable ways	8	Maximum continuous operating voltage (L-N)	275V
IP rating	IP4XC	Maximum discharge current (8/20) (L-N)	15A
Terminal capacity	35 mm ²	Nominal discharge current (8/20) (L-N)	5A
Incomer device	100A Isolator	Maximum back-up fuse	63A / 100A

Specifications

TECHNICAL DATA



Product code

VSDB-63 16W /
VSDB-100 16W

Product range

Voltage optimisation

Issue No.

A

Issue Date

23/01/2023

Issue By

S.A.H

**All-in-one auto-transformer and consumer unit.
C/W type 2/3 surge protection device.**

Features:

- Selectable voltage to suit installation
- Selectable protection (RCBO, RCD, MCB, AFDD)
- 1 x automatic fire suppression system
- Type 2/3 surge arrester
- 1 x auto-transformer (63A or 100A)
- Supplied with 1 x 100A isolator
- Full complement of earth, neutral terminals and busbar
- Labels and instructions
- Amendment 3 compliant
- Metal clad enclosure

DESCRIPTION

General characteristics	16 way optimised unit	Cable entry	40 mm K.O's + rear cut outs
Standards	BS EN 61439-3	Material (enclosure)	Mild steel
Current rating	63A / 100A	Finish	Powder coat white RAL 9010
Input voltage	230V - 275V ~	Weight VSDB63	19.75kg
Optimised output voltage	-6% , -8% , -10%	Weight VSDB100	23.7kg
Efficiency	>99.7%	Dimensions VSDB63	(W = 503 mm) x (H = 258 mm) x (D = 198mm)
Frequency	50 Hz.	Dimensions VSDB100	(W = 553 mm) x (H = 258 mm) x (D = 198mm)
Fault current rating	16kA	Surge device details	
No. of poles	Single pole	Remote indication	Yes
No. of ways	21	Designation according to EN 61643-11	Type 2/3
Useable ways	16	Maximum continuous operating voltage (L-N)	275V
IP rating	IP4XC	Maximum discharge current (8/20) (L-N)	15A
Terminal capacity	35 mm ²	Nominal discharge current (8/20) (L-N)	5A
Incomer device	100A Isolator	Maximum back-up fuse	63A / 100A

Specifications

TECHNICAL DATA



Product code

VSDB-63 12W /
VSDB-100 12W

Product range

Voltage optimisation

Issue No.

A

Issue Date

23/01/2023

Issue By

S.A.H

**All-in-one auto-transformer and consumer unit.
C/W type 2/3 surge protection device.**

Features:

- Selectable voltage to suit installation
- 1 x automatic fire suppression system
- Type 2/3 surge arrester
- 1 x auto-transformer (63A or 100A)
- Amendment 3 compliant

RCBO Spec:

Fully populated with 12 RCBO's
(1 x 40A, 4 x 32A, 3 x 16A, 4 x 6A)
Standard: BS EN 61009
Type: A
Bi-Directional
Short circuit rating: 6 Ka
Double Pole
B-Curve

DESCRIPTION

General characteristics	12 way optimised unit	Cable entry	40 mm K.O's + rear cut outs
Standards	BS EN 61439-3	Material (enclosure)	Mild steel
Current rating	63A / 100A	Finish	Powder coat white RAL 9010
Input voltage	230V-275V ~	Weight VSDB63	17.55kg
Optimised output voltage	-6% , -8% , -10%	Weight VSDB100	21.7kg
Efficiency	>99.7%	Dimensions VSDB63	(W = 431 mm) x (H = 258 mm) x (D = 198mm)
Frequency	50 Hz.	Dimensions VSDB100	(W = 481 mm) x (H = 258 mm) x (D = 198mm)
Fault current rating	16kA	Surge device details	
No. of poles	Single pole	Remote indication	Yes
No. of ways	17	Designation according to EN 61643-11	Type 2/3
Useable ways	12	Maximum continuous operating voltage (L-N)	275V
IP rating	IP4XC	Maximum discharge current (8/20) (L-N)	15A
Terminal capacity	35 mm ²	Nominal discharge current (8/20) (L-N)	5A
Incomer device	100A Isolator	Maximum back-up fuse	63A / 100A

VOLTSMART®

Managing Energy Efficiency



0333 344 5629



info@voltsmart.com



www.voltsmart.com