



# Fast Trak<sup>®</sup> Range

For the installation of electrical containment, pipework, ductwork and other mechanical services

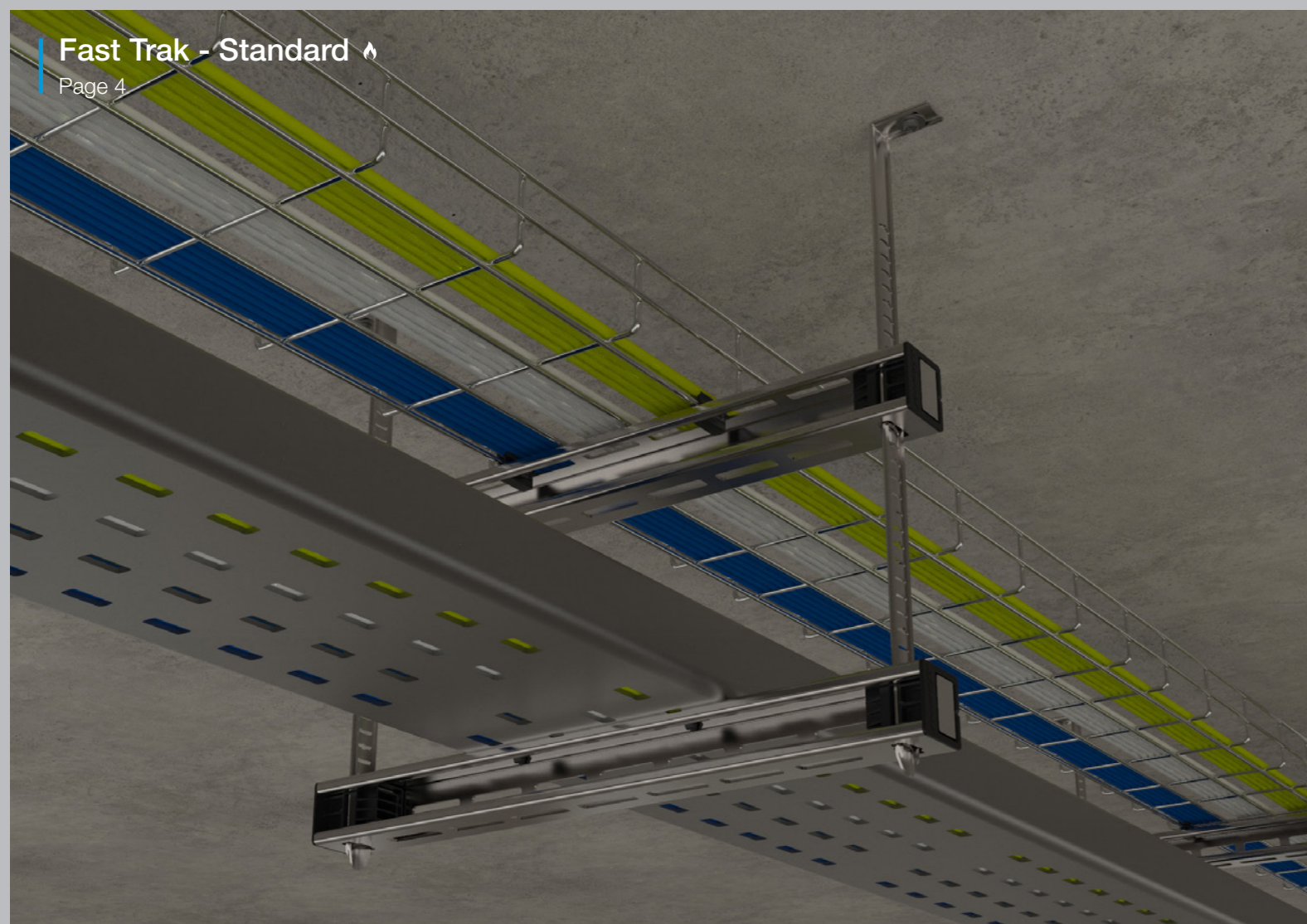


- Versatile
- Quick installation
- Safe & secure



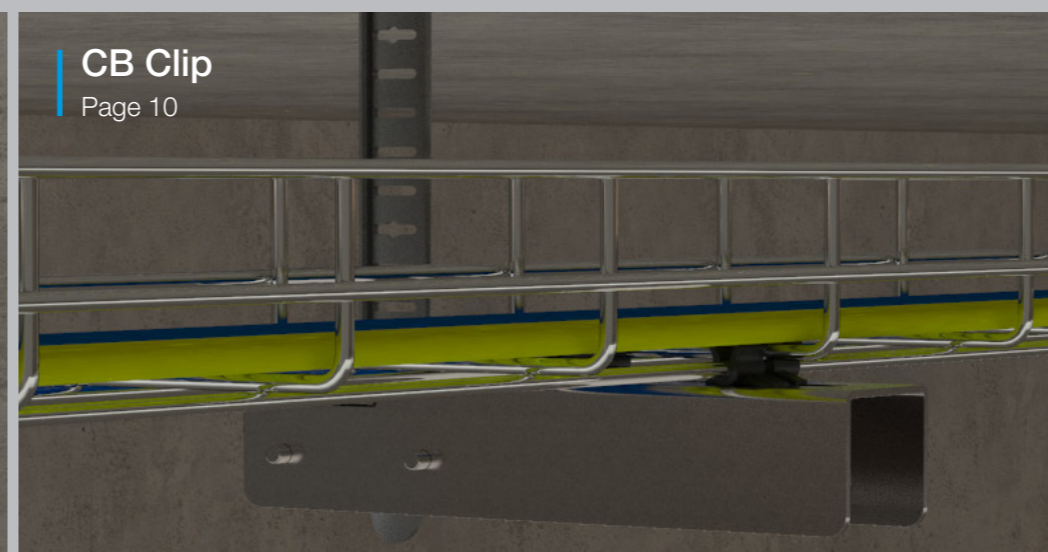
### Fast Trak - Standard

Page 4



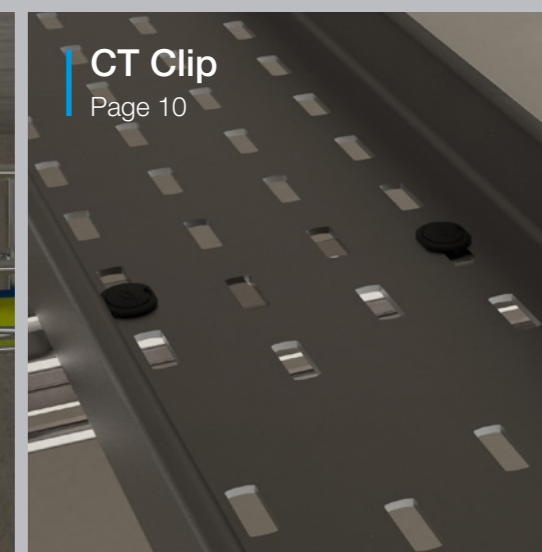
### CB Clip

Page 10



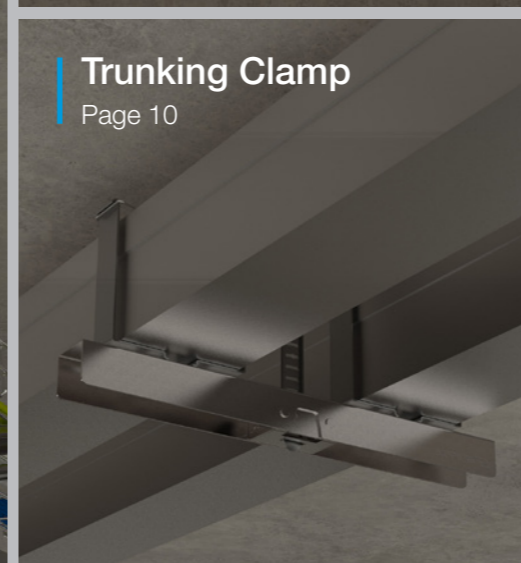
### CT Clip

Page 10



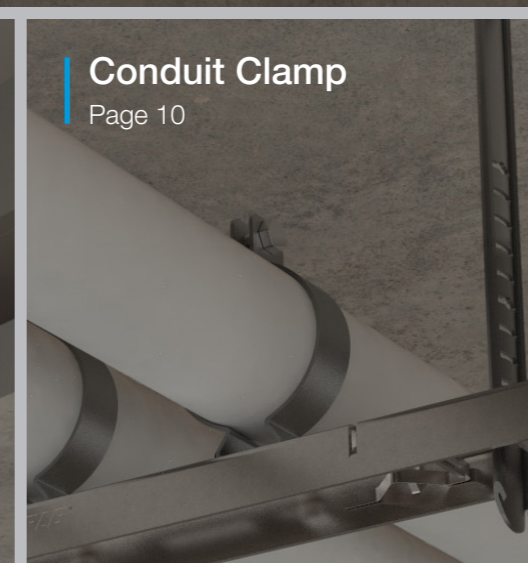
### Trunking Clamp

Page 10



### Conduit Clamp

Page 10



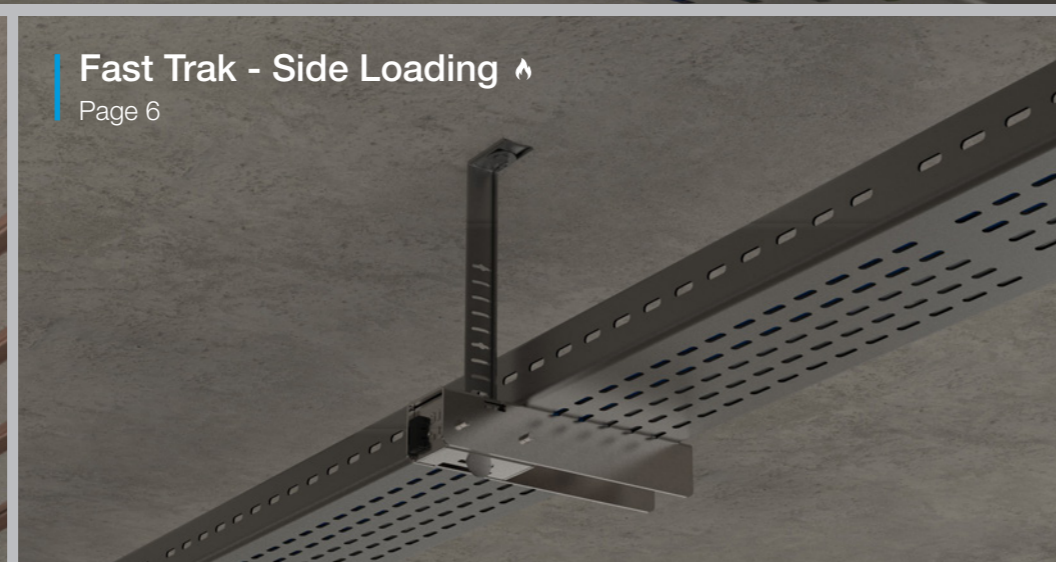
### Fast Trak - Low Profile

Page 5



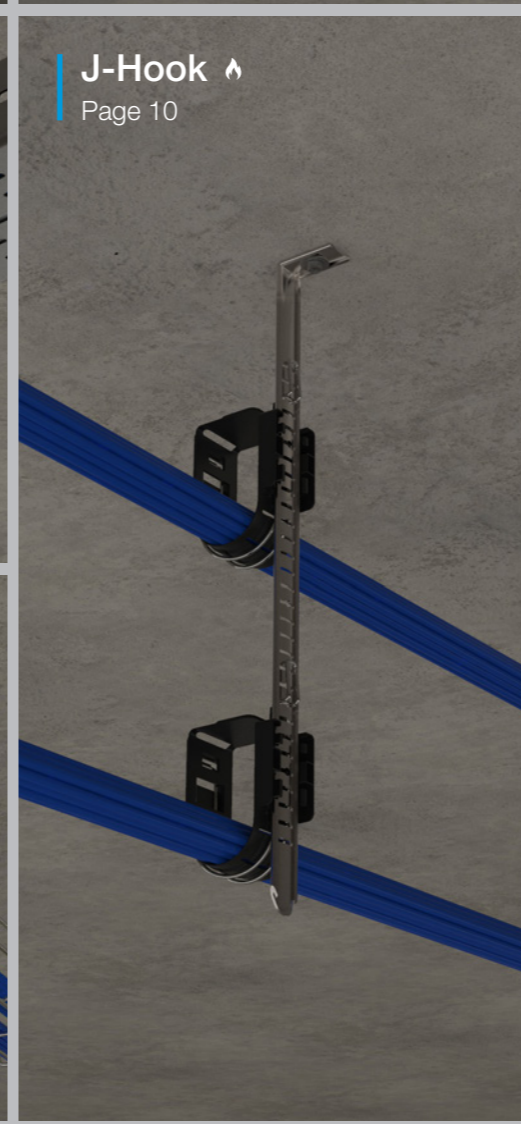
### Fast Trak - Side Loading

Page 6



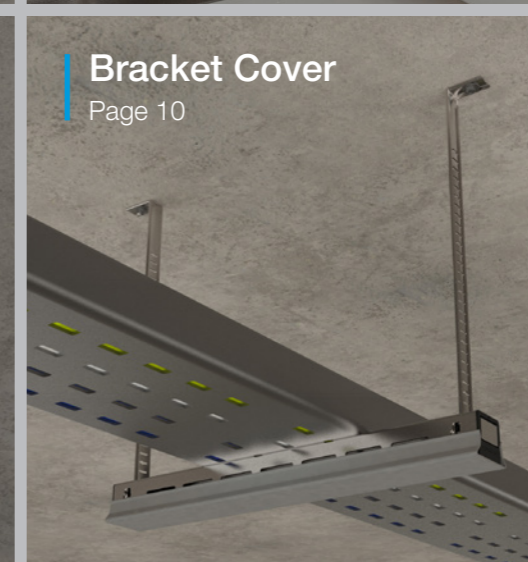
### J-Hook

Page 10



### Bracket Cover

Page 10



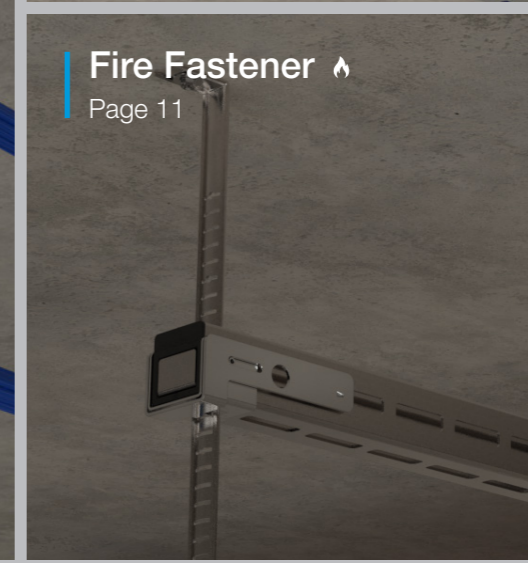
### Fast Trak - Segregated

Page 7



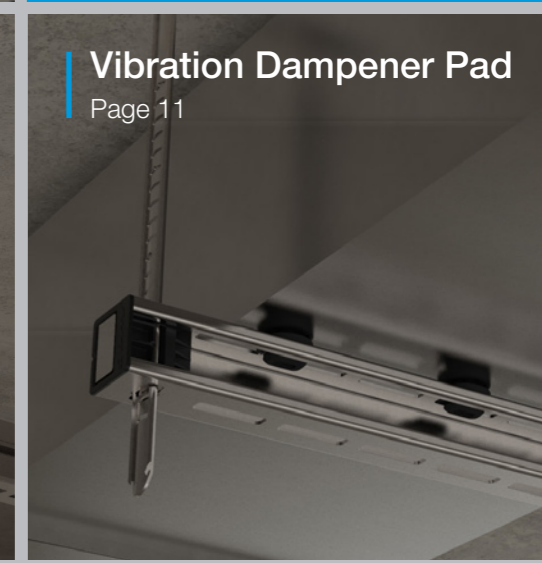
### Fire Fastener

Page 11



### Vibration Dampener Pad

Page 11



**Gripple Fast Trak®** is a rapid bracket suspension solution for mechanical and electrical services. Removing labour intensive on-site activity associated with traditional suspension systems, Fast Trak is a pre-fabricated, off-site solution which vastly simplifies the installation of cable containment, pipework and ductwork in building services applications.

The next instalment in Gripple innovation, Fast Trak delivers significant cost and labour savings, carbon efficiencies and minimises health and safety concerns.



# Fast Trak® - Standard



Pre-fabricated trapeze bracket solution offering speed, flexibility and efficient use of space, for the installation of electrical containment, pipework, ductwork and other mechanical services in restricted places.

**Fire Rated** – tested to F120, according to the temperature curve of BS EN 1363-1:2020\*. For certification to support load limits and exposure, see page 14

**Quick** – up to six times faster to install than traditional suspension systems

**Safe** – pre-fabricated system which removes the need to cut threaded rod or channel on-site

**Tool free adjustment** – bracket can be moved up and down the tracks to accommodate changes in position during installation

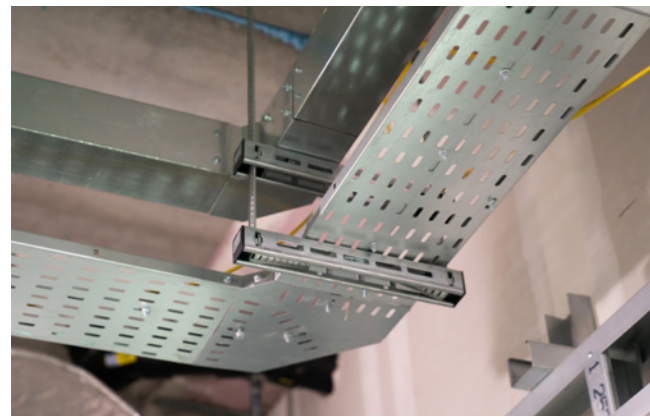
**Zero waste** – tracks bend neatly under bracket

**Versatile** – four-sided bracket provides suspension point on every face

**Easy measurement** – indicators for marking fixing points on the ceiling; M4 level markers on the tracks highlight 50 mm increments, no leveling tools required

**Neat & tidy** – system can be 'stacked' on-site to reduce storage requirements

**Space saver** – can be multi-tiered to accommodate additional services



## Available Bracket Sizes



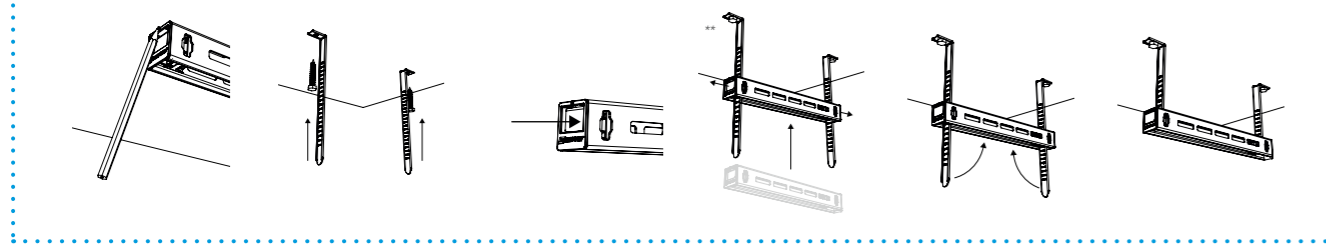
**System Rating** Up to 200 kg' SWL (3:1) **Bracket Sizes** 170 mm - 1470 mm Bracket sizes increase in 100 mm increments

## Available Track Sizes



**Track Sizes** 200 mm - 1500 mm Track sizes increase in 100 mm increments

## Installation Steps



\*Fire Fastener needed when used channel-side up ('u' orientation). Tested at ambient temperatures, contact Gripple for full product information, submittal data and technical support.  
\*\*When installed correctly, button must be fully retracted and flush with the cartridge edge. Do not adjust under load. SWL is dependent on the bracket size and orientation.

# Fast Trak® - Low Profile



A space efficient low profile pre-fabricated trapeze bracket. Ideal for use with electrical containment, pipework and mechanical services in ultra-restricted ceiling spaces.

**Fire Rated** – tested to F120, according to the temperature curve of BS EN 1363-1:2020\*. For certification to support load limits and exposure, see page 14

**Space saver** – 21 mm bracket depth is even lower profile than standard Fast Trak range

**Quick** – up to six times faster to install than traditional suspension systems

**Safe** – pre-fabricated system which removes the need to cut threaded rod or channel on-site

**Tool free adjustment** – bracket can be moved up and down the tracks to accommodate changes in position during installation

**Easy measurement** – indicators at each end of the bracket can be used as a measurement guide when marking fix points in the ceiling

**Neat & tidy** – system can be 'stacked' on-site to reduce storage requirements

**Aesthetic** – tracks bend neatly under bracket\*\*



## Available Bracket Sizes



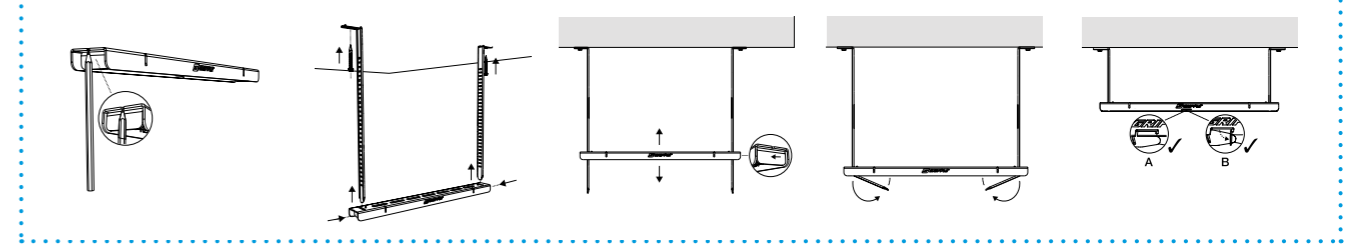
**System Rating** Up to 75 kg' SWL (3:1) **Bracket Sizes** 190 mm - 1490 mm Bracket sizes increase in 100 mm increments

## Available Track Sizes



**Track Sizes** 200 mm - 1500 mm Track sizes increase in 100 mm increments

## Installation Steps



\*Tested at ambient temperatures, contact Gripple for full product information, submittal data and technical support.  
\*\*Excess tracks cannot be snapped off once bracket is levelled.  
\*\*\*When installed correctly, button must be fully retracted and flush with the cartridge edge. Do not adjust under load. SWL is dependent on the bracket size and orientation.

# Fast Trak® - Side Loading



Pre-fabricated side loading bracket solution offering speed and flexibility for the installation of lightweight electrical containment, pipework, ductwork and other mechanical services in restricted places.

**Fire Rated** – tested to F120, according to the temperature curve of BS EN 1363-1:2020\*. For certification to support load limits and exposure, see page 14

**Quick** – up to six times faster to install than traditional suspension systems

**Safe** – pre-fabricated system which removes the need to cut threaded rod or channel on-site

**Tool free adjustment** – bracket can be moved up and down the tracks to accommodate changes in position during installation

**Secure** – safety locks ensure security once brackets and tracks are in place\*\*

**Space saver** – can be multi-tiered to accommodate additional services

**Easy installation** – lightweight services can be side loaded onto the bracket

**Neat & tidy** – system can be 'stacked' on-site to reduce storage requirements



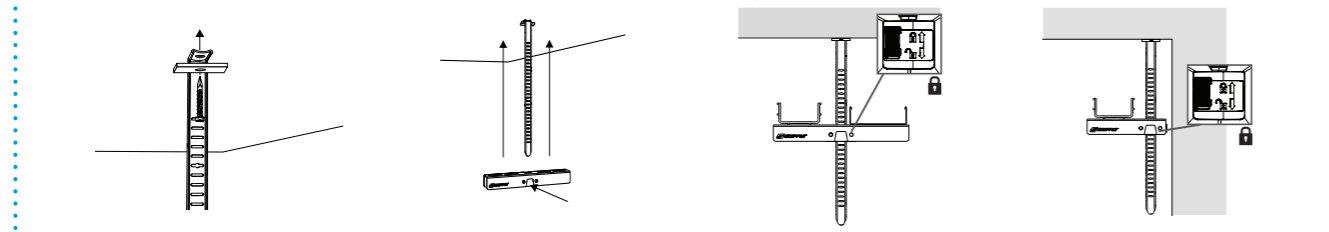
## Available Bracket Sizes

	
Single Load FTBS-180 – 15 kg 3:1 SWL***	Twin Load <sup>1</sup> FTBT-200 – 30 kg 3:1 SWL FTBT-300 – 30 kg 3:1 SWL FTBT-400 – 30 kg 3:1 SWL

## Available Track Sizes


<b>Track Sizes</b> 200 mm - 600 mm
Track sizes increase in 100 mm increments

## Installation Steps



\*Tested at ambient temperatures, contact Gripple for full product information, submittal data and technical support.  
\*\*Excess tracks cannot be snapped off once bracket is levelled.  
\*\*\*When installed correctly, button must be fully retracted and flush with the cartridge edge. Do not adjust under load. SWL is dependent on the bracket size and orientation.

# Fast Trak® - Segregated



Pre-fabricated side loading bracket solution offering speed and flexibility for the installation of lightweight services that require separation such as data and power cables.

**Fire Rated** – tested to F120, according to the temperature curve of BS EN 1363-1:2020\*. For certification to support load limits and exposure, see page 14

**Quick** – up to six times faster to install than traditional suspension systems, lightweight services can be side loaded onto the bracket

**Safe** – pre-fabricated system which removes the need to cut threaded rod or channel on-site

**Compliant** – adheres to regulations where electrical and power must be separated by a required distance

**Tool free adjustment** – bracket can be moved up and down the tracks to accommodate changes in position during installation

**Secure** – safety locks ensure security once brackets & tracks are in place\*\*


**Space saver** – can be multi-tiered to accommodate additional services

**Easy measurement** – indicators above adjustment buttons on the bracket offer a measurement guide when marking fixing points on the ceiling; M4 level markers on the tracks highlight 50 mm increments, with no leveling tools required

**Neat & tidy** – system can be 'stacked' on-site to reduce storage requirements



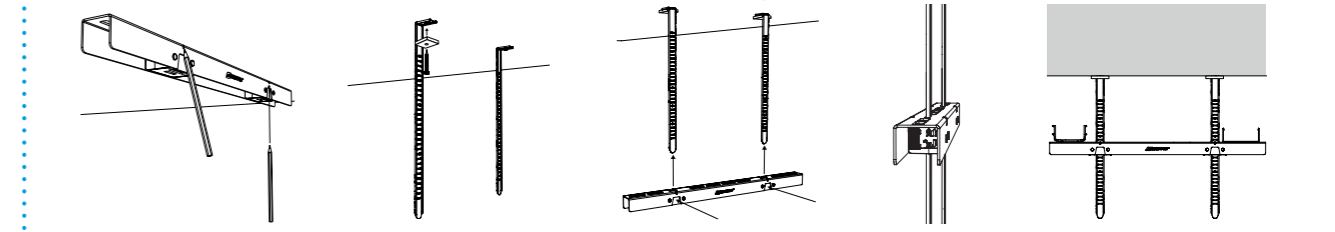
## Available Bracket Sizes


Bracket*** FTBSG-130 – 2 x 22.5 kg 3:1 SWL FTBSG-240 – 2 x 22.5 kg 3:1 SWL FTBSG-350 – 2 x 22.5 kg 3:1 SWL

## Available Track Sizes


<b>Track Sizes</b> 200 mm - 600 mm
Track sizes increase in 100 mm increments

## Installation Steps



\*Tested at ambient temperatures, contact Gripple for full product information, submittal data and technical support.  
\*\* Excess tracks cannot be snapped off once bracket is levelled.  
\*\*\* When installed correctly, button must be fully retracted and flush with the cartridge edge. Do not adjust under load. SWL is dependent on the bracket size and orientation.



# Fire Fastener

A fire rated push-fit fastener designed for attaching onto a Fast Trak bracket. The fastener is only required to provide a fire rated solution when the bracket is in a 'u' orientation (i.e. channel side up).

**Fire Rated** – tested to F120 in accordance with BS EN 1363-1:2020 temperature curve

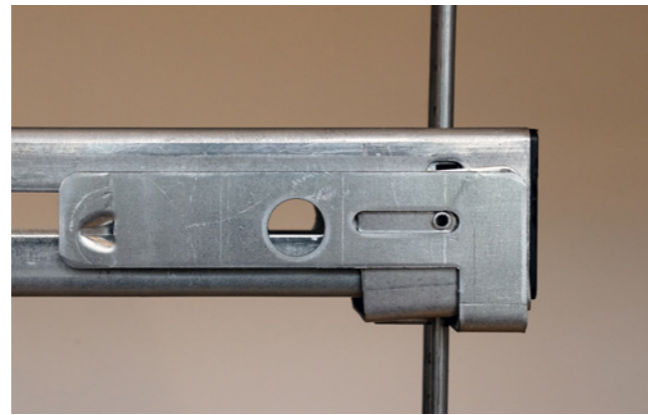
**Quick** – no tool installation

**Simple** – push fit-design

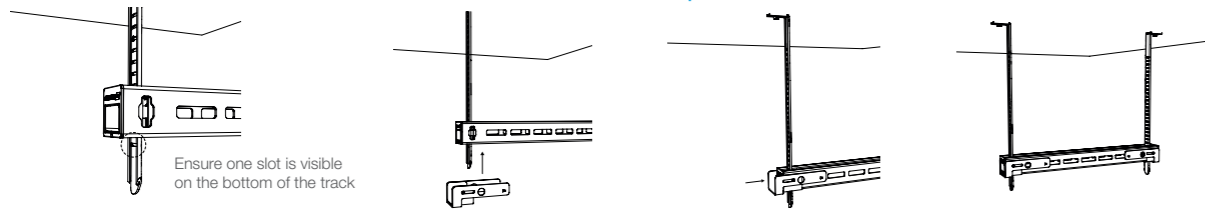
**Ready-to-use** – pre-assembled fastener

**Compatible** – facilitates the use of the Fast Trak system in fire rated applications

**Versatile** – fits all bracket lengths of Fast Trak - Standard



## Installation Steps



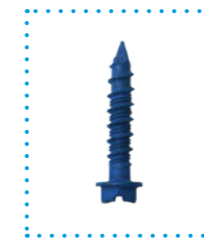
*Do not adjust under load. Contact Gripple for full product information, submittal data and technical support. Excess tracks can also be snapped off once bracket is levelled & secured for a neater finish. Bending tracks by hand is not recommended when excess is under 100 mm.*

# Mounting Methods



## Concrete Screw

Suitable for cracked and non-cracked concrete. Can be removed.



## CWS32

Easy-fit screw suitable for wood, non-cracked concrete, precast hollow concrete and hard natural stone



## Drop-In Anchor & M10 Screw

Suitable for cracked and non-cracked concrete, precast hollow core concrete and hard natural stone.

# Fast Trak Product Codes

1 CHOOSE YOUR FAST TRAK BRACKET LENGTH*										
Standard			Low Profile			Side Loading				
239 mm FTB-170	339 mm FTB-270	439 mm FTB-370	235 mm FTBL-190	335 mm FTBL-290	435 mm FTBL-390	180 mm FTBS-180	210 mm FTBT-200	290 mm FTBT-300		
539 mm FTB-470	639 mm FTB-570	739 mm FTB-670	535 mm FTBL-490	635 mm FTBL-590	735 mm FTBL-690	400 mm FTBT-400				
839 mm FTB-770	939 mm FTB-870	1039 mm FTB-970	835 mm FTBL-790	935 mm FTBL-890	1035 mm FTBL-990					
1139 mm FTB-1070	1239 mm FTB-1170	1339 mm FTB-1270	1135 mm FTBL-1090	1235 mm FTBL-1190	1335 mm FTBL-1290					
1439 mm FTB-1370	1539 mm FTB-1470		1435 mm FTBL-1390	1535 mm FTBL-1490						
						Segregated				
						607 mm FTBSG-130	827 mm FTBSG-240	1047 mm FTBSG-350		

*\*Part codes shown above relate to the suspension space for positioning building services onto the Fast Trak brackets, not the full length of the brackets. For more information on bracket sizes and safe working loads please contact Gripple Technical Services.*

2 CHOOSE YOUR FAST TRAK TRACK LENGTH									
Suspension Track									
200 mm FTT-200	300 mm FTT-300	400 mm FTT-400	500 mm FTT-500	600 mm FTT-600	700 mm FTT-700	800 mm FTT-800			
900 mm FTT-900	1000 mm FTT-1000	1100 mm FTT-1100	1200 mm FTT-1200	1300 mm FTT-1300	1400 mm FTT-1400	1500 mm FTT-1500			

# Accessories

## CB Clip

Developed for the quick fastening of cable basket to Gripple Fast Trak. Available in two different sizes.



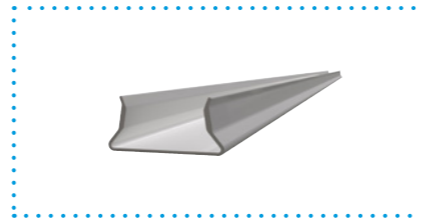
## CT Clip

Developed for the quick fastening of cable tray to Gripple Fast Trak. Available in two different sizes.



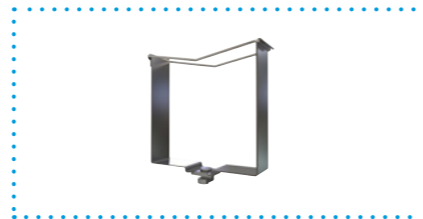
## Bracket Cover

Neatly hides tracks to further enhance the aesthetics of the Fast Trak system.



## Trunking Clamp

Quarter turn attachment to Fast Trak bracket for quick installation of trunking. Available in four different sizes.



## Conduit Clamp

Quarter turn attachment to Fast Trak brackets for quick installation of conduit. Available in eight different sizes.



## J-Hook 🔥

For use in conjunction with Fast Trak tracks to support all types of data cables.



## Metal Decking Adaptor

Versatile adaptor that can be used in conjunction with the Fast Trak system and a range of decking wedges to ensure building services can be suspended from various metal decking profiles. Available in M8 and M10 versions.



## Vibration Dampener Pad

The Vibration Dampener Pad (VDP) is designed for vibration reduction when installing rectangular ducting on Fast Trak.



## Fire Fastener 🔥

A fire rated push-fit fastener designed for attaching onto a Fast Trak bracket. The fastener is only required to provide a fire rated solution when the bracket is in a 'u' orientation (i.e. channel side up).



## Track Protector

An end cap designed for protruding tracks to reduce the risk of injury. Available in two different sizes.



## QT Universal Clamp

Designed for use with Gripple Brackets to provide quick and easy pipework installation.



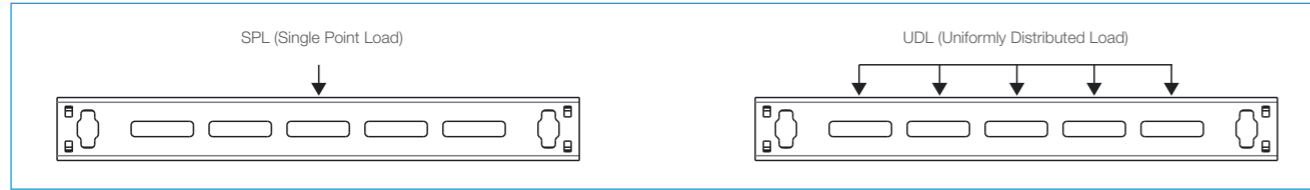
## QT Compact Clamp

Used in conjunction with Gripple Brackets for quick and easy support of all types of pipework within mechanical and plumbing services.



# Fast Trak Bracket Data

## Maximum Working Load\*



## Fast Trak - Standard (kg/kN)

FTB-270 to FTB-1370

Bracket Orientation**	'n' orientation		'c' orientation	
	kg	kN	kg	kN
Single Point Load (SPL) @ 3:1	100 kg	0.98 kN	70 kg	0.68 kN
Uniformly Distributed Load (UDL) @ 3:1	200 kg	1.96 kN	130 kg	1.27 kN

FTB-1470

Single Point Load (SPL) @ 3:1	100 kg	0.98 kN	70 kg	0.68 kN
Uniformly Distributed Load (UDL) @ 3:1	175 kg	1.71 kN	130 kg	1.27 kN

## Fast Trak - Low Profile (kg)

Bracket	FTBL 190	FTBL 290	FTBL 390	FTBL 490	FTBL 590	FTBL 690	FTBL 790	FTBL 890	FTBL 990	FTBL 1090	FTBL 1190	FTBL 1290	FTBL 1390	FTBL 1490
UDL (Uniformly Distributed Load)	230	160	130	110	100	90	70	70	55	55	50	40	40	35
SPL (Single Point Load)	175	115	75	70	60	50	40	40	30	30	25	20	20	20

## Fast Trak - Low Profile (kN)

Bracket	FTBL 190	FTBL 290	FTBL 390	FTBL 490	FTBL 590	FTBL 690	FTBL 790	FTBL 890	FTBL 990	FTBL 1090	FTBL 1190	FTBL 1290	FTBL 1390	FTBL 1490
UDL (Uniformly Distributed Load)	2.26	1.57	1.27	1.08	0.98	0.88	0.69	0.69	0.54	0.54	0.49	0.39	0.39	0.34
SPL (Single Point Load)	1.72	1.13	0.74	0.69	0.59	0.49	0.39	0.39	0.29	0.29	0.25	0.20	0.20	0.20

\*For more details on specified loads or additional deflection ratings please contact Gripple Technical Services. When loading multiple faces the total load applied must not exceed the values stated.

\*\*Can also be installed in a 'u' orientation but a Fire Fastener must be used to retain fire rating. Contact Gripple Technical Services for more information on this application.

# Key Recommendations

Failure to comply with these recommendations may result in product malfunction and possible damage to property or person and will invalidate the Gripple guarantee. Gripple products are guaranteed to be free from defects in materials and workmanship in accordance with our terms and conditions. No other warranty, whether express or implied, including any warranty of merchantability or fitness for purpose shall exist in connection with the sale or use of any Gripple product.

Full technical information and installation instructions should be obtained directly from Gripple Limited, Gripple Europe, Gripple Inc., Gripple Japan, Gripple Poland, Gripple India, Gripple Germany, any regional Gripple office, or via the website ([www.gripple.com](http://www.gripple.com)). These Key Recommendations may be amended from time to time; please view the Key Recommendations page on the Gripple website ([www.gripple.com](http://www.gripple.com)) for the most up-to-date information.

Please adhere to the following usage recommendations:

	<b>Loads</b> Always operate the product within its stated safe working load range. Suspend static loads only. Do not subject to shock loading. Do not adjust under load.		<b>Lifting</b> Do not use for lifting, either by crane or as part of a pulley system.
	<b>Hanging at an angle to vertical</b> Ensure that the load calculation considers the effect of 'side load'. For example, at an angle of 60° to vertical the SWL is effectively reduced by 50%.		<b>Impact</b> If there is potential for impact on the wire rope suspension or suspended services, seek advice from Gripple Ltd. Technical Services prior to installation.
	<b>Ducting</b> When installing included angle teardrop hangers on round/spiral ducting or pipes, the final included angle of the assembly should not exceed 60°.		<b>Lubrication</b> Do not apply oil or any other lubricant to the hanger or any other part of the assembly.
	<b>Y-Fit</b> Legs on Y-Fit not to be installed greater than 60°.		<b>Wire Rope</b> Trim any damaged filaments with the wire cutter before use.
	<b>Environment</b> Do not use in chlorinated or chemically corrosive atmospheres. Standard hangers are for use in dry and air conditioned environments only. Stainless steel hangers should be considered for high to saturated humid environments after validation by a competent person.		<b>Installation</b> Do not walk or stand on the Gripple product installation. Gripple products must not be used for personal suspension, fall protection or harnessing people.
	<b>Swimming Pools</b> Not suitable for swimming pools.		<b>Painting</b> Do not paint the hanger prior to installation. Ensure the hanger is in its final position prior to applying any paint to the wire rope assembly. Do not move the fastener after painting.
	<b>Joining</b> Never join two ends together in-line.		<b>Storing</b> Do not store the product outdoors, or in damp or abnormal conditions.
	<b>Traceability</b> Always use the Gripple hanger with the specified wire rope supplied by Gripple. Gripple products should only be used with products supplied by Gripple Ltd., and the warranty will not apply if our products are used with any products supplied by third parties.		<b>Repair, Modification and Re-use</b> Do not repair, modify or re-use Gripple products. If you have any queries regarding product performance, please contact <a href="mailto:TechnicalServices@gripple.com">TechnicalServices@gripple.com</a>

## Quality & Approvals

Gripple UK is ISO 9001:2015 and ISO 14001 certified. Gripple products meet the highest standards of quality with lowest environmental impact.



Gripple's policy is one of continuous development and innovation. We therefore reserve the right to alter specifications, etc. without notice.

# Fire Rated Product Matrix

All figures shown below are absolute loads. For safety factors of ambient temperature loads, please contact Gripple Technical Services for more information.

3rd Party Fire Tested to BS 476 (ISO 834) Fire Curve Temperatures				
Temperature	842°C	945°C	1006°C	1049°C
Test Duration	30 mins (FR30)	60 mins (FR60)	90 mins (FR90)	120 mins (FR120)
<b>Fast Trak - Standard</b>				
Top 'n' Orientation (All sizes)	85 kg	65 kg	55 kg	48 kg
Bottom 'u' Orientation (with Fire Fastener)** (All sizes)	60 kg	60 kg	60 kg	44 kg
Side 'c' Orientation (All sizes)	80 kg	60 kg	54 kg	41 kg
<b>Fast Trak - Low Profile</b>				
Low Profile (All sizes)	80 kg	75 kg	60 kg	48 kg
<b>Fast Trak - Side Loading (Single Load)</b>				
Single Load 180	15 kg	15 kg	15 kg	15 kg
<b>Fast Trak - Side Loading (Twin Load)</b>				
Twin Load 200	15 kg (7.5 kg per side)	15 kg (7.5 kg per side)	15 kg (7.5 kg per side)	10 kg (5 kg per side)
Twin Load 300	15 kg (7.5 kg per side)	15 kg (7.5 kg per side)	15 kg (7.5 kg per side)	10 kg (5 kg per side)
Twin Load 400	15 kg (7.5 kg per side)	15 kg (7.5 kg per side)	15 kg (7.5 kg per side)	10 kg (5 kg per side)
<b>Fast Trak - Segregated</b>				
Segregated (All sizes)	40 kg	40 kg	20 kg	10 kg
<b>Universal Bracket</b>				
Top 'n' Orientation (All sizes)	85 kg	65 kg	55 kg	48 kg
Side 'c' Orientation (All sizes)	80 kg	60 kg	54 kg	41 kg
<b>Low Profile Bracket</b>				
Low Profile (All sizes)	90 kg	45 kg	45 kg	45 kg
<b>Accessories</b>				
J-Hook	1.25 kg	1.25 kg	1.25 kg	1.25 kg

# Fire Rated Product Matrix

Temperature	3rd Party Fire Tested to BS 476 (ISO 834) Fire Curve Temperatures			
	842°C	945°C	1006°C	1049°C
Test Duration	30 mins (FR30)	60 mins (FR60)	90 mins (FR90)	120 mins (FR120)
<b>Gripple Fire Rated Hangers</b>				
HF2...SS-F	15 kg	7.5 kg	2.5 kg	2.5 kg
HF3...SS-F	45 kg	20 kg	10 kg	10 kg
<b>Gripple FR Y-Fit Accessories</b>				
AY2-HG...SS-F - Snap Hook End Fixing	15 kg	7.5 kg	2.5 kg	2.5 kg
AY3-HG...SS-F - Snap Hook End Fixing	45 kg	20 kg	10 kg	-
AY2-KS...SS-F - Karabiner (8-80S) End Fixings	15 kg	7.5 kg	2.5 kg	-
AY3-KS...SS-F - Karabiner (8-80S) End Fixings	25 kg	20 kg	10 kg	-
<b>Gripple Trapeze Plus FR Hangers</b>				
MTZ2...SS-F	15 kg	7.5 kg	2.5 kg	2.5 kg
MTZ3...SS-F	45 kg	20 kg	10 kg	10 kg
MTZ4...F	100 kg	50 kg	25 kg	25 kg
<b>Gripple Trapeze Plus FR Hangers with Cable Basket Adaptor</b>				
MTZ2...SS-CBA-F	15 kg	7.5 kg	2.5 kg	2.5 kg
<b>Gripple Trapeze Plus FR Hangers - Side Exit</b>				
MTS2...SS-F	15 kg	7.5 kg	2.5 kg	2.5 kg
MTS3...SS-F	45 kg	20 kg	10 kg	10 kg
<b>Gripple G-Brackets</b>				
G100	30 kg	30 kg	15 kg	-
G200	30 kg	30 kg	15 kg	-
G300	30 kg	15 kg	15 kg	-
G400	30 kg	15 kg	15 kg	-
<b>Fire Rated Clips</b>				
FRC-S-100-P-SS-F (Fire Rated Clip - Single)	0.24 kg	-	-	-
FRC-D-100-P-SS-F (Fire Rated Clip - Double)	2 x 0.24 kg	-	-	-

	Loop	M8 Stud	M8 Channel Nut	M10 Stud	Eyelet	90° Eyelet	Toggle
<b>Gripple Fire Rated Hangers</b>							
HF2...SS-F	∅	∅	∅	-	∅	∅	-
HF3...SS-F	∅	∅	∅	-	∅	o	∅
<b>Gripple Trapeze Plus FR Hangers</b>							
MTZ2...SS-F	∅	∅	∅	-	∅	∅	∅
MTZ3...SS-F	∅	∅	∅	-	∅	o	∅
MTZ4...F	-	-	-	∅	-	-	-
<b>Gripple Trapeze Plus FR Hangers with Cable Basket Adaptor</b>							
MTZ2...SS-CBA-F	∅	∅	∅	-	∅	∅	∅
<b>Gripple Trapeze Plus FR Hangers - Side Exit</b>							
MTS2...SS-F	∅	∅	∅	-	∅	∅	∅
MTS3...SS-F	∅	∅	∅	-	∅	o	∅

**Notes**

British Standards Institution, BS 476-20:1987, Fire tests on building materials and structures Part 20: Method for the determination of the fire resistance of elements of construction (general principles), BSI London, 1987. This standard refers to the ISO834 Fire Curve.

\*Fire Fastener needed when used in a 'u' orientation (i.e. channel side up)

\*\*Gripple Universal Bracket and Fast Trak loading values are for uniformly distributed load (UDL)

Rev G 10.08.23

Key	
-	End Fixing unavailable
∅	F30, F60, F90 and F120 available
o	F30, F60 and F90 only



# www.gripple.com

sales@gripple.com

## Gripple Ltd (Headquarters)

The Old West Gun Works  
Savile Street East  
Sheffield S4 7UQ  
UK

**T** | +44 (0) 114 275 2255

**F** | +44 (0) 114 275 1155

**E** | sales@gripple.com

### Gripple Europe SARL

1, rue du Commerce  
BP 37  
67211 Obernai Cedex  
France

**T** | +33 (0)3 88 95 44 95

**F** | +33 (0)3 88 95 08 78

**E** | frinfo@gripple.com

### Gripple Inc

1611 Emily Lane  
Aurora  
IL 60502  
USA

**T** | +1 866 474 7753

**F** | +1 800 654 0689

**E** | grippleinc@gripple.com

### Gripple India

C-115, Industrial Area  
Phase I, Naraina  
New Delhi-110028  
India

**T** | +91 11-40582703

**F** | +91 11-40582703

**E** | ininfo@gripple.com

### Gripple Canada Inc

6665 Tomken Road  
Units 9-10  
Mississauga, ON L5T 2C4  
Canada

**T** | +1 905 458 8700

**F** | +1 800 654 0689

**E** | cainfo@gripple.com

### Gripple Japan K.K

2-57 Tsukizi-cho  
Hyogo-ku, Kobe-shi  
Hyogo, 652-0845  
Japan

**T** | +81 (0) 78 681 2121

**F** | +81 (0) 78 681 2122

**E** | japan@gripple.com

### BROC-FAST-ENG

Published August 2023

Please refer to [www.gripple.com](http://www.gripple.com) for the most up to date user advice and product information.



A GLIDE company



© 2023 Gripple.

Gripple is a registered trademark of Gripple Limited.  
Company registered in England No. 1772901, VAT Reg No. GB 600 1951 88