



**So we have a collective  
problem.**

**We're all in trouble and in  
the same boat.**

**Are you adding to the  
problem or part of the  
solution!?**

Ours is a finite earth -  
let's be stewards of  
our environment





...A PURPOSE DRIVEN BUSINESS

# —TRACOUK—

- THE RECYCLED ASSETS COMPANY -

Est 2013

*...for a sustainable future*

B CORP  
&  
SOCIAL  
ENTERPRISE

**Jason Bentley**  
**Founder & MD**

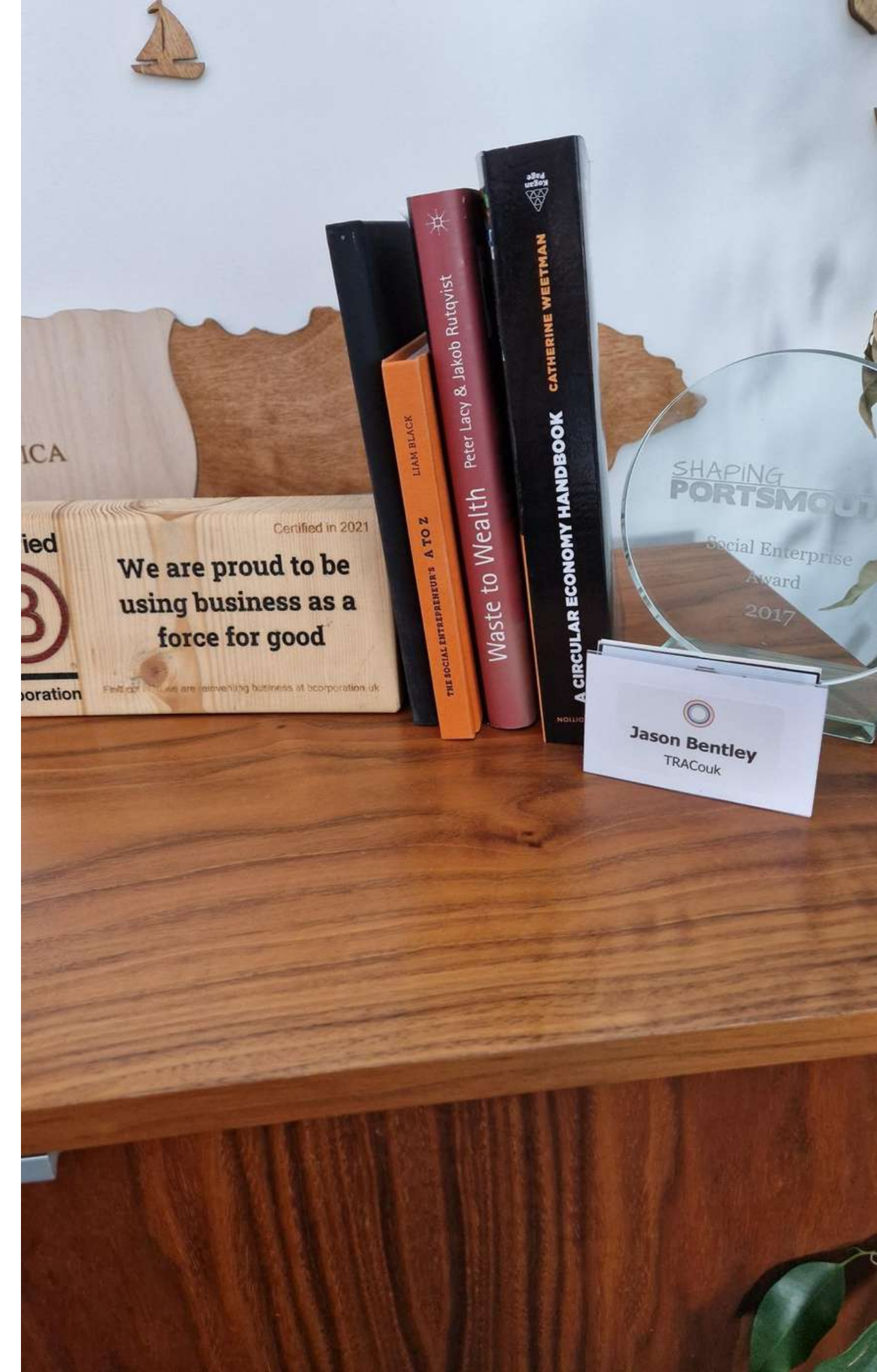


# Who are TRACOUk?

- You call us when you are refurbishing, moving, clearing buildings.
- Storing anything?...you definitely need to call us.
- You call us if you care about your carbon footprint.
- You call us when you want value back from your assets.
- You call us if you just want to be refreshed and inspired!

## The basics...

**22 STAFF - £900K TURNOVER - 2 WAREHOUSES  
5 VEHICLES - PROFITABLE! - B CORP & SE - LONDON &  
SOUTH BASED - WE MAKE GREAT PARTNERS!**







**What's the  
problem?**

## **THE BIG PICTURE**

Too much consumption to sustain a healthy environment.

## **THE IMPACT**

Planet vandalism...and it's rife.

## **SO WHAT?**

We can't keep doing what we've always done...

---

## **BUILD THE ARGUMENT**

Making the case for re-use.



**Our bit?**

## **WALK IN DIFFERENT SHOES**

Buying used is the new new...but where do you start?





# "It's the 'circular economy' stupid!"

"A circular economy is a model of production and consumption, which involves sharing, leasing, reusing, repairing, refurbishing and recycling existing materials and products as long as possible." wikipedia



# Spell it out

BUY  
LESS  
BUY  
BETTER

## DOING MORE WITH LESS

Ensuring sustainable consumption and production

## USING LONGER

Don't replace if you don't need to.

## CLOSING THE LOOP

Take back schemes, ensuring assets get fed back into the supply chain for reuse/recycle.

# Facilities Management

You guys see it  
all!

YOU HAVE ONE OF THE  
HARDEST JOBS IN A BUSINESS

ALL  
DIRECTIONS





# HOW CAN WE HELP?

- Undertaking a refurb?
- Moving premises?
- Need to store something of value?
- Want to buy quality used or remanufactured?

CSCS  
Registered



Gold  
Constructionline

Safe  
Contractors

EA - Dealer,  
Carriers, Brokers







# How does it work?

- Starts with a site survey.
- Establish cost and savings.
- Process and grade the assets.
- Register you on Portal - asset tracker.
- Assets are donated, sold, recycled.
- Money starts to flow in...
- Carbon savings start to accumulate...

**Reuse &  
Rebate**

Case Study

# Wates

Job: Empty 2 x 20ft shipping containers of redundant furniture.  
Location: Leatherhead  
Time: 5 hrs base to base  
Cost: £540+vat

Solution: Team of 2 in large truck to clear contents.  
Items brought back for processing. Goods added to sales channel.  
Expected return: £1,376.25 (on portal visible to client)



Q0468 03/02/2023 05/05/2023 25% £1,376.25 £0.00 02/03/2023 02:01:00 ✓

**BOSS DESIGN RED STACKABLE CHAIR (AEE-917-24F)**  
**£30.00 (Inc. VAT)**  
**£25.00 (Ex. VAT)**  
Current Stock: 5







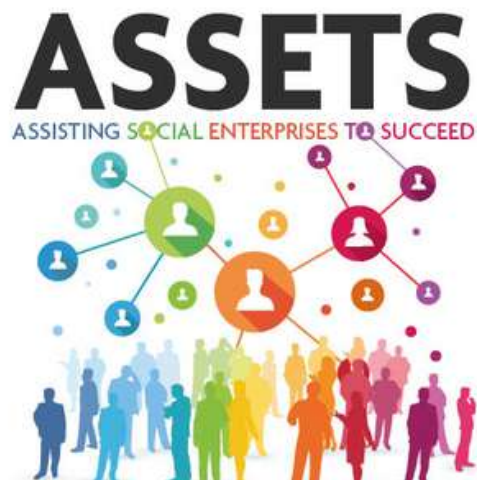
## REGISTERED & LICENSED WITH THE EA

A vehicle Operator with fleet of small and large trucks.



## SUPPORT DISADVANTAGED PEOPLE BACK INTO WORK

We look for the good, we hire based on what they can bring, not how old or what limits them.

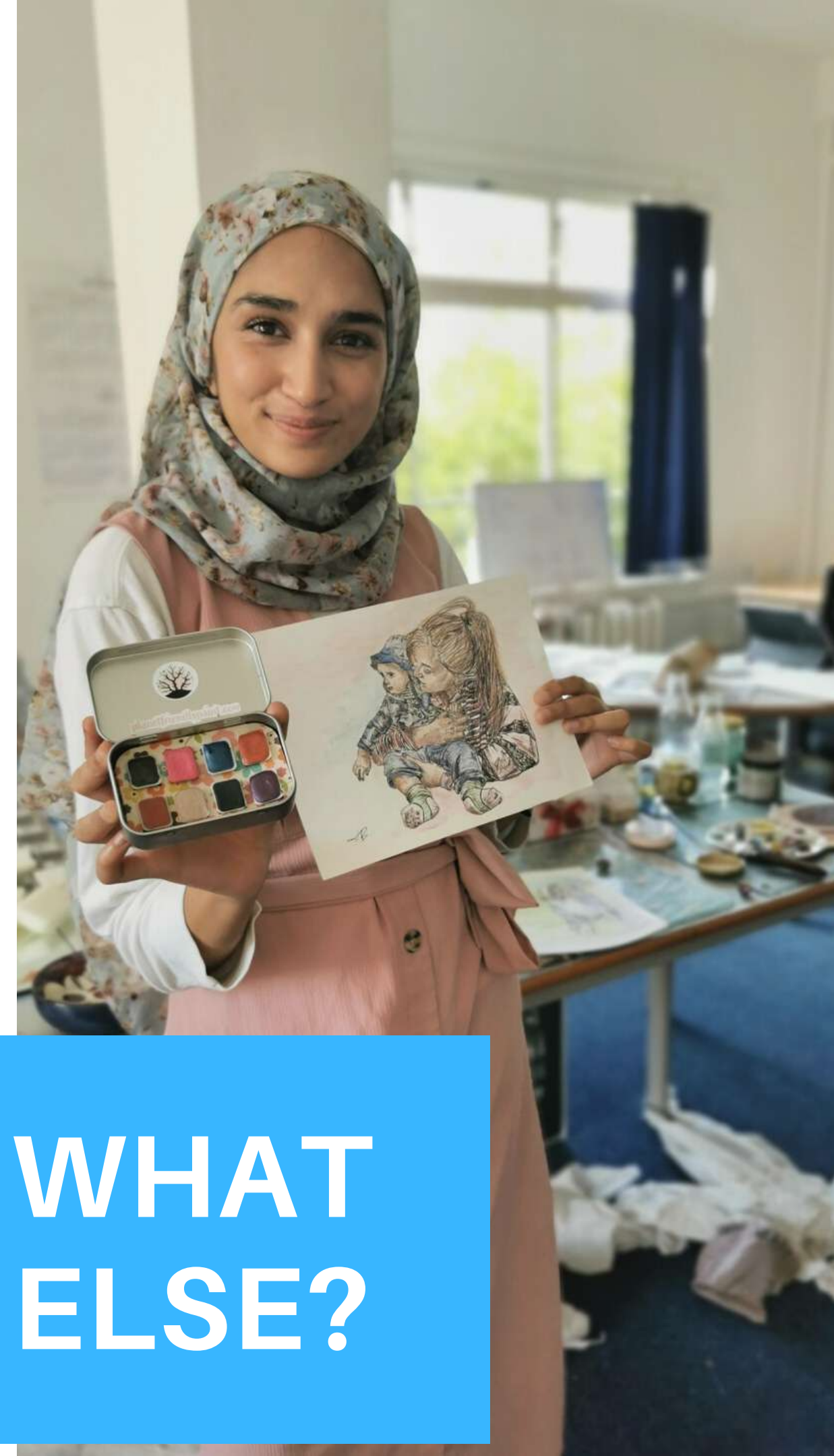


## ALUMNI WATES ASSETS PROGRAMME

We're proud to be collaborating with leading social enterprises in the construction space, including:



**WHAT  
ELSE?**





TRACOUk...saving  
the planet, one  
chair at a time!

Certified in 2021  
We are proud to be  
doing business as a  
force for good  
we are reinventing business at bcorporation.uk

THE SOCIAL ENTREPRENEUR'S A TO Z  
LIAM BLACK

Waste to Wealth Peter Lacy & Jakob Rutqvist

2ND EDITION  
A CIRCULAR ECONOMY HANDBOOK CATHERINE WEETMAN

**It's all about  
Reuse**

**...it's the only  
game in  
town!**

[jason@tracouk.com](mailto:jason@tracouk.com)  
[www.tracouk.com](http://www.tracouk.com)