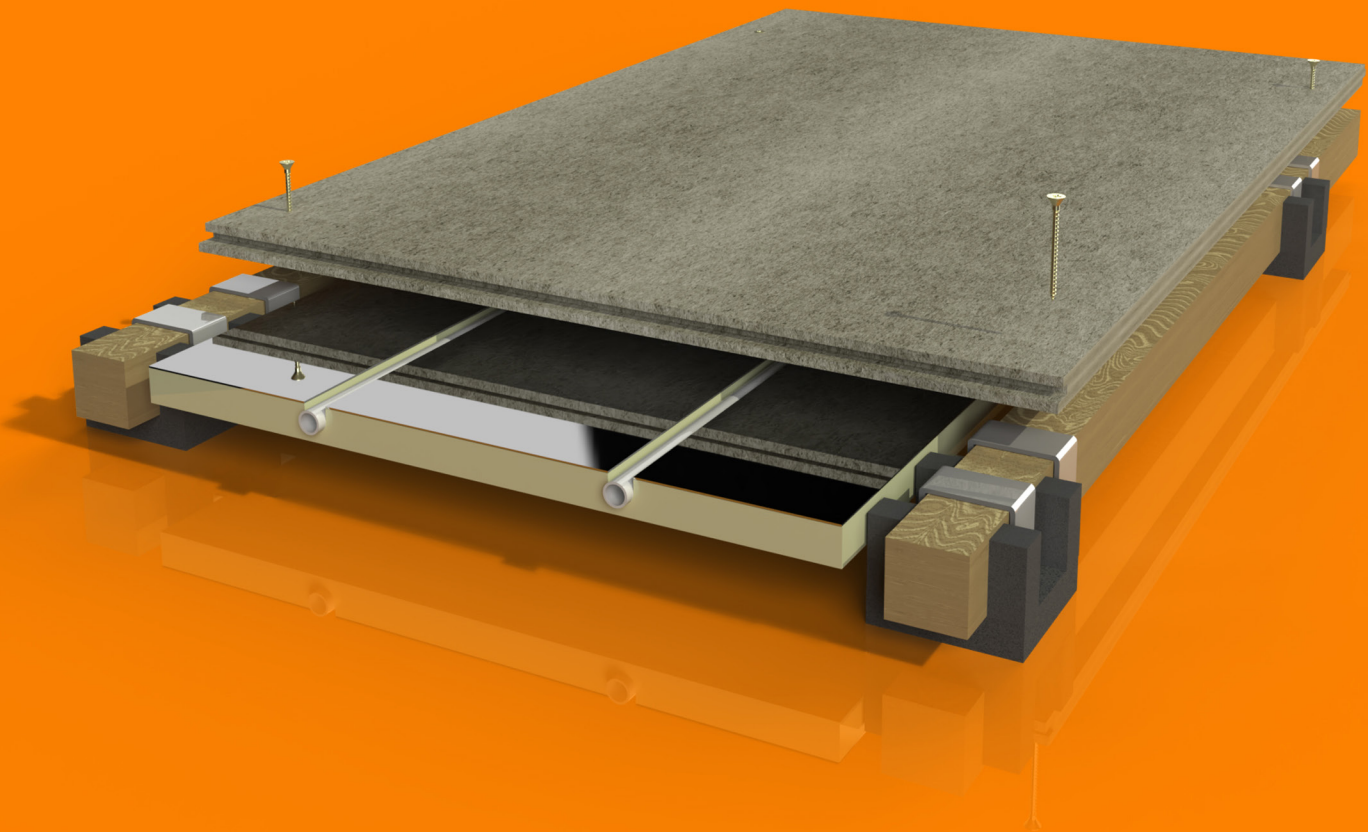




Cradle and batten acoustic flooring system

Cradle and batten acoustic flooring system

- **Patented system delivers outstanding acoustic performance exceeds requirements of UK Building Regulations**
- **Dry alternative to screed, system is installed directly on a damp-proof membrane on the concrete slab and is commonly used in residential and hotel projects.**
- **Levels uneven floors on-site**

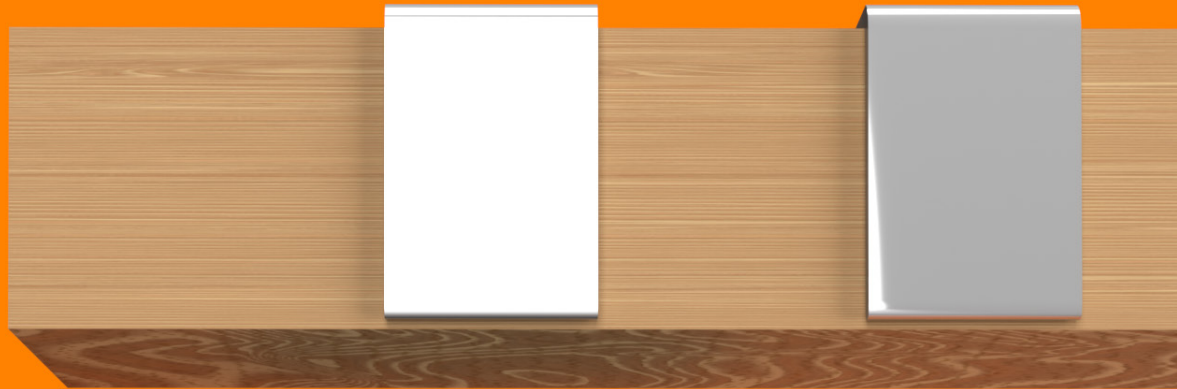


- **Rubber cradle manufactured from recycled lorry tyres**
- **Battens made from FSC timber or recycled UPVC window frames**
- **Cradle Base Packers made from recycled rubber tyres**

System components

Timber Batten

43 x 43 x 1800mm
35 x 43 x 1800mm
25 x 43 x 1800mm

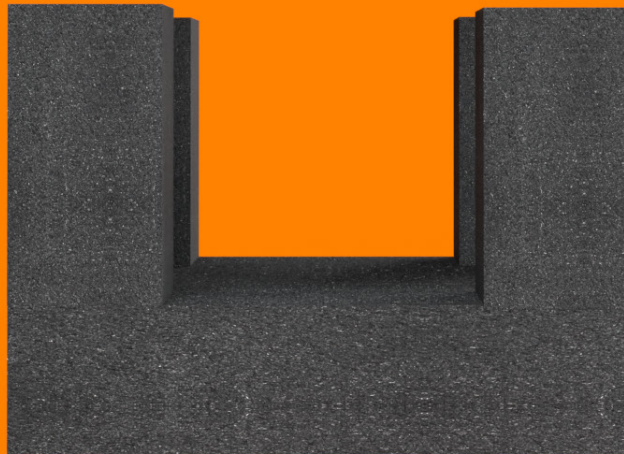


Cradle Packers

2mm
5mm



Recycled Rubber Crumb Cradle



Cradle Base Packer

30mm
10mm



Compare cradle and batten acoustic flooring with traditional screed installation:

- **Cuts installation time by 30%** saving months on the project timeline
- **No drying, no waiting** times
- **Over 5 times lower embodied carbon** compared with sand and cement screed.
- **Streamlines the construction sequence** – no wet trade contractors, just one contractor with one responsibility to get the job done
- **Lightweight system** – over 4 times lower structural loading compared to anhydrite screed
- **Constructability** – different cradle heights and packers under the battens can achieve a level finish from an uneven slab
- **Improves efficiency** – underfloor heating can be installed at the same time
- **Tested for safety and fire resistance** - reports available on request

New Battersea Power Station

Main Contractor:
Sir Robert McAlpine

Project Scope:
Manufacture, Design and Installation

- Project covered over 600 apartment units
- No wet trade needed: we replaced the screed option saving them 12 weeks in programme
- Reduced number of trade interfaces on-site
- Full UFH commissioning package
- Fire Stopping



Sir Robert
McALPINE

[Read the case study click or scan here](#)



South Quay Plaza Canary Wharf



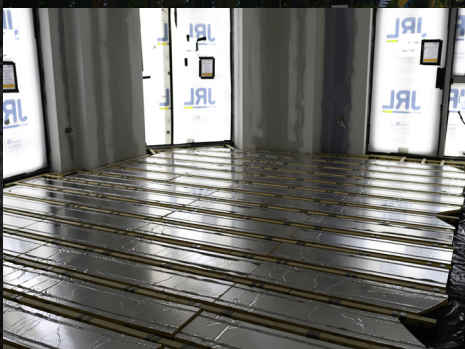
Main Contractor:
Berkeley Homes (SEL) Limited

Project Scope:
Manufacture, Design and Installation

- Full UFH commissioning package: over 22 miles of under floor heating pipework was supplied, installed and tested
- Project saved more than 11,000 lorry tyres from landfill
- Accredited Hilti Fire Stopping
- Achieved full compliance with the client's site requirements, quality procedures and construction programme



Elephant & Castle Regeneration



Main Contractor:
Lendlease Construction

Project Scope:
Manufacture, Design and Installation

- Full UFH commissioning package including thermostatic controls
- Over 2,000 units delivered
- Environmentally sustainable solution supported the aims of Elephant Park to be the UK's first Climate Positive Development

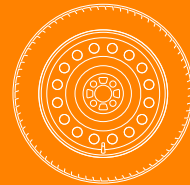


[Read the case study click or scan here](#)



Supporting sustainable construction

- **No concrete screeds** – less transportation and less energy use, reduced CO2 emissions and lower levels of embodied carbon in the construction
- **Reduced environmental impact** – cradles are manufactured from recycled rubber crumb made from worn vehicle tyres, battens are made from FSC certified and sustainably sourced timber or recycled UPVC window frames. Every 5 m² of flooring saves 1 tyre from landfill so over 10,000m² of flooring saves 2,000 tyres going to landfill.
- **Less landfill** – our acoustic systems prevent thousands of tons of vehicle tyres going to landfill every year
- **Improves energy efficiency and construction efficiency** – our acoustic flooring installation can include the complete UFH package
- **Our environmental management system** is certified ISO 14001
- **InstaGroup acoustic flooring systems have a 60-year guarantee** and will last the lifetime of the building



[For about our sustainable construction click or scan here](https://www.instacoustic.co.uk)

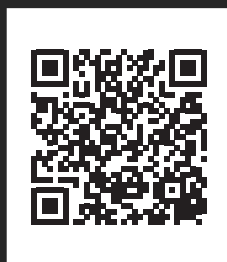


About Us

- Over 25 years of experience in manufacturing, supplying and installing acoustic systems
- Part of InstaGroup established in 1980
- Trusted for our technical excellence and in-house expertise
- Our people are our most important asset, and we invest in and continually train our teams
- We offer a complete service, from specification support, system design and technical back-up to Pre-Completion Testing
- We limit contractor risks and liabilities – see some of our safety accreditations below



[For a full list of our safety accreditations click here or scan below](#)





Expert advice for your next project

For more on our acoustic cradle and batten flooring, or to find out about our acoustic systems for walls and ceilings, please get in touch.

 [**james.wilson@instagroup.co.uk**](mailto:james.wilson@instagroup.co.uk)

 **0118 973 9560**

 [**instacoustic.co.uk**](http://instacoustic.co.uk)