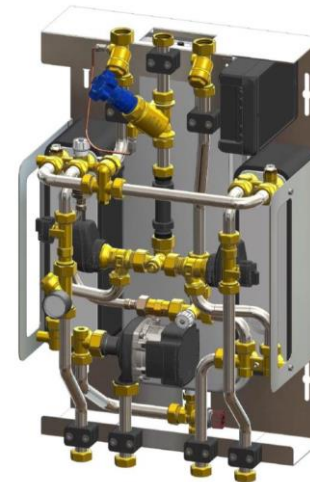
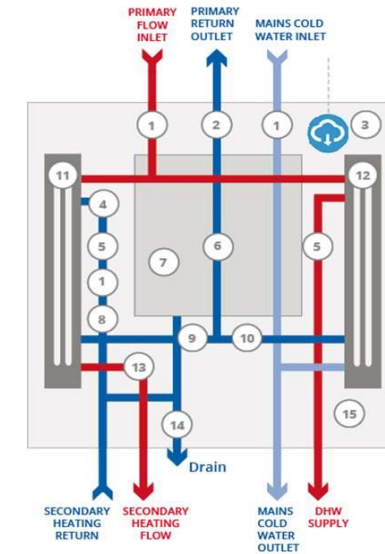


Hillpark Drive- Glasgow



HIU Schematic



Network Type: District Heat Network

Energy Source: Air Source Heat Pump with Gas Boiler back-up

Status: Commissioned 2018

Main message: Average return temperature is 40°C to enable heat pump with a 40% reduction in per kWh heat versus mechanical HIU.

No. of Connections: 315

HIU: ESSCO Twin-plate with Minibems

Story: Residents at Hillpark Drive were paying 18p/kWh with electrical storage heating. They now pay 8.5p/kWh, lifting many households out of fuel poverty.



The OpEx realities of heat network deployment in the U.K.

